



Engine Controls - Relays

Situation: Part life in solid-state relays shortened by the lack of thermal shutdown and overvoltage protection

Solution: CARQUEST Advantage

CARQUEST relays equipped with custom application specific integrated circuits that provide accurate resettable thermal shutdown and overvoltage protection for longer part life.

Late model vehicles typically have 10-15 relays but can have as many as 40. Relays control vital functions such as fuel delivery, vehicle cooling systems and electrical charging as well as accessories such as lights, wipers and radios. A non-functioning relay will cause a function to remain in the "off" or "on" position.

Repair tips:

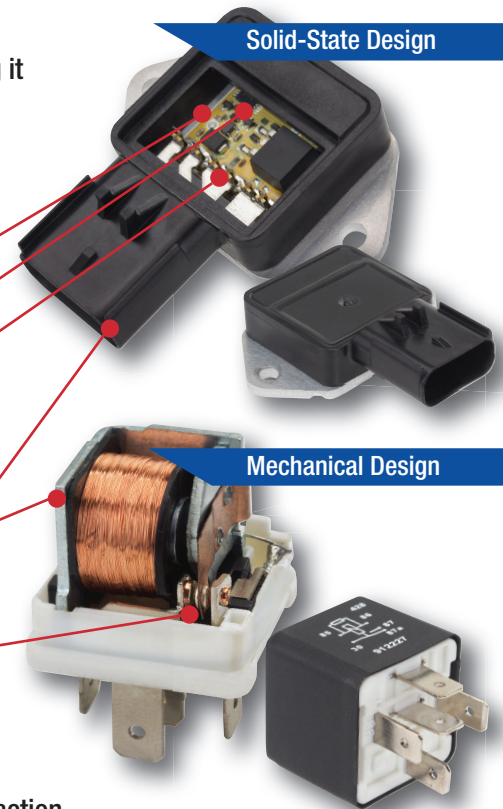
- Relays that operate motors typically have diodes which provide circuit protection. Light, radio and auxiliary relays may or may not have resistors and diodes. For proper performance, select the correct relay for the application.
- When replacing a relay, locate the OE number and specifications on the non-functioning relay. Many OEs label relays as "miscellaneous" making it difficult to identify the correct replacement.
- Before replacing any relay, visually inspect the entire electrical circuit including the component, relays, connectors and wiring in the circuit. Look for heat damage and damaged wires.

Features:

- Rapidly dissipates heat for cooler operating temperatures and longer part life
- Precise short-circuit protection
- High-current welded connections for reliability
- Mounting and connectors identical to OE
- OE form, fit and function for precise fit and reliable operation
- Semi-precious metal contacts

Benefits:

- Meets or exceeds OE specifications
- Longer accessory and relay life
- Precise fit and size for ease of installation
- Increased customer satisfaction
- Comprehensive warranty



Visit us at - ecc.carquest.com





Engine Controls - Relays

Top Movers



56-1556

Chevrolet 2002-1990
Buick 1994-1982

56-1577

Chev/GMC Trucks & Vans
2007-1996
Buick 2008-1994

56-1551

Chev/GMC Trucks & Vans
2007-1995
Buick 2008-1995

56-1561

Cadillac 2008-1993
Chevrolet 2005-1991

56-1550

Buick 2007-1995
Cadillac 2008-1998

56-1554

Buick 2009-1994
Cadillac 2009-1994

56-2426

Ford Trucks & Vans
2002-1995

56-2464

Buick 2008-2005
Chev/GMC Trucks & Vans
2006-2003

56-1552

Buick 2005-1988
Cadillac 2005-1994

56-1756

Ford 1996-1981
Ford Trucks & Vans
1997-1988

56-1574

Dodge 2003-1997
Dodge Trucks & Vans
2000-1996

56-1711

Buick 1993-1988
Chevrolet 1993-1986

56-1746

Chrysler 2006-1985
Dodge 2006-1990

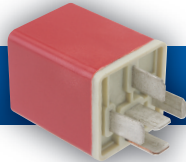
56-1788

Buick 1995-1982
Cadillac 1992-1986

56-2175

Honda 2000-1996

Top Gainers



56-1995

Ford 2000-1994
Mercury 1997-1994

56-2175

Honda 2000-1996

56-2035

Acura 2007
Honda 2007-2003

56-2464

Buick 2008-2005
Chev/GMC Trucks & Vans
2006-2003

56-2426

Ford Trucks & Vans
2002-1995

56-1982

Infiniti 2008-1990
Nissan/Datsun
2008-1985

56-1671

Chevrolet 2002-1998
Lexus 2006-1997

56-1889

Acura 2006-1986
Chev/GMC Trucks & Vans
1982-1972

56-1746

Chrysler 2006-1985
Dodge 2006-1990

56-2509

Infiniti 2006-1993
Nissan 2006-1993

Import Sampling



56-1506

Audi 2009-1975
Volkswagen 2009-1975

56-2509

Infiniti 2006-1990
Nissan 2006-1991
Subaru 2005-2000

56-2089

Lexus 2007-1997

56-1692

Acura 1990-1986
Lexus 2000-1990
Mitsubishi 2003-1983

56-1530

Honda 1993-1990

56-1548

Acura 1993-1986
Honda 1991-1988

56-1671

Lexus 2009-1993
Scion 2006-2004
Toyota 2008-1993

56-1629

Lexus 2000-1996
Mitsubishi 2001-1992
Toyota 2001-2000

56-1563

Infiniti 1997-1990
Nissan/Datsun 1998-1979

56-1825

Toyota 2007-1985
Lexus 2006-1990